



GVD VMS 4.0

Taiwan Most Powerful Ai LPR are available

Aug 10, 2023 - ITRI is Taiwan Government owned Technology Research Organization, with 6000 Master/Doctor degree engineers. GVD has been working with ITRI to co-develop Ai LPR for its new generation LPR solutions.

GVD latest LPR solution is high accurate Ai license plate recognition systems result from 5M data samples with Ai Deep Learning.

GVD's Deep Learning uses NVIDIA's high-performance GPU to greatly speed up video image processing and significantly shorten the time of running algorithms.

This new market-proven solution has been widely installed with more than 100,000 cameras in Taiwan.

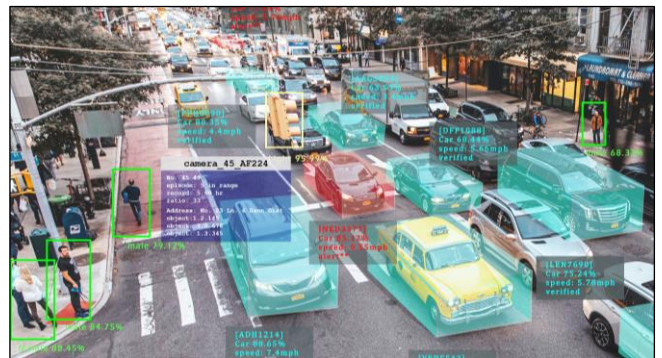
GVD VMS Ai LPR has achieved:

- High license plate locating from image
- High license plate recognition rate
- Ai image enhancement
- Wide camera angle recognition

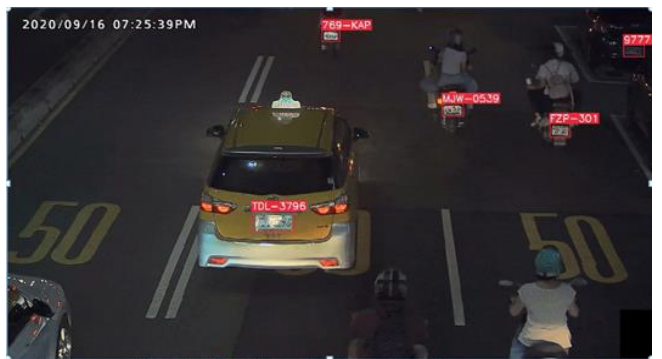
GVD new released Ai solution has been installed in many Taiwan gasoline stations to automate and speed up the payment, also deploy at one of Taiwan major city for the city traffic management.



iGance Dashboard: State statistics & average statistics



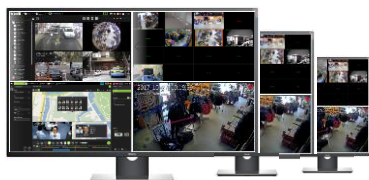
GVD Ai Vehicle Classification



AI based LPR in nighttime on busy Taipei Street

GVD VMS 4.0 Product Lineup

D4200 VMS Videowall



"Synchronous Videowall Control" from platform center to decoders. Each decoder supports max. 4 monitors and each monitor supports 64 synchronous live videos, and Intuitive GUI.

E4200 / E2200 VMS Workstation



Cloud-based with AI, with iGance Dashboard to quantify system data with graphics. Powerful features include: eMaps, CaseBuilder, Device Manager, and Synchronous Videowall Control.

H8000 Cloud NVR Server



Container-based cloud NVR for max. 1280 HD channels per server.

X8000 / SH800 Cloud Archive Server



X8000 brings high-end and high-availability backup to max. 1280 HD channels per server. SH800 comes with iSCSI or fiber ports for massive data throughput, with expansion up to 512 HDDs per



A5208 / N1100 AI AppPack Server AI Edge Node

Features dual CPUs and four GPUs for high AI performance and exclusive "Virtual Channels" to bust the high-price of AI., with AI modeling for LPR, vehicle classification, human behavior, and face recognition.

C5104 VMS Database Server



Supports 100,000 cameras, with high-scalability, high-availability, and cluster & redundant design for zero down-time.

C6101 Device Keeper



An automated maintenance system for software version overview, license dispatch, and automatic system upgrade for a large group of GVD servers. All tasks are centralized and simplified in Device Keeper to avoid human mistakes and improve efficiency and productivity.

M6000/4000/3000 M2000/1000/X5000 NVR & Failover Server



GVD NVRs are high-performance NVRs with Modbus support for massive system integration. GVD Failover Server is good for uninterrupted and seamless video live-view and playback.



GVD NVR auto-retrieves edge storage from networked cameras and saves them to the NVR's storage.



Azure Google Cloud AWS Public / Private Cloud

M1000 Mobile NVR



Supports 8 channels and 4G / WiFi, with fanless design, PoE LAN ports, and certified with railway standards EN50155, EN50121-3-2, & EN61373.



GVD Apps iOS / Android

Supports 20 live-videos, 128 channels, and 50 NVRs, with push alarm notice, push alarm emails, and alarm list.

Success Story



Smart City Taichung

As Taiwan's 2nd largest city with a population of 2.8M, Taichung City has integrated GVD VMS with more than 20,000 cameras.

Taichung uses GVD VMS to improve city traffic, where IP cameras collect and pass video images to the cloud-based AI servers to classify vehicle types, such as sedans, motorbikes, buses, trucks, etc., and to identify objects, such as parkways. So vehicle speeds and traffic flow are estimated.



Taipei Police Dept.

The Police Department of the capital city Taipei Taiwan has deployed more than 400 pieces of 4G-enabled cameras in GVD VMS platform and used 350 units of GVD Management Console E4200 to access the system, just to ensure zero dark corners in the city that never sleeps. GVD VMS supports ONVIF Profile G & S to combine edge storage and centralized cloud. Now this project is ready for 5G.



Thai Bank

Thailand's largest state-owned bank with 1,000 branches nation-wide had chosen GVD VMS platform to protect their assets. The project built the storage in a private cloud and has integrated AI Facial Recognition in GVD VMS to reach the highest level of security.



Semiconductor FABs in Japan & Korea

GVD products are used by some major players in the field of semiconductors. The VMS 4.0 Pro Suites are collaborating closely with the Automated Guided Vehicles (AGV) in the semiconductor fabs of SAMSUNG and SK Hynix in both Japan and Korea. More than 4000 WiFi IP cameras with SD cards are recording video to GVD VMS' Hybrid Storage to ensure 24x7 production is free from problems.

